

bq24730/31EVM (HPA111) for Multicell Synchronous Notebook Charger and System Power Selector

Contents

1	Introduction	2
2	Test Summary	5
3	Circuit Design and Layout Guideline	14
4	Bill of Materials, Board Layout, and Schematics.....	15

List of Figures

1	Original Test Setup for bq24730EVM.....	7
2	Original Test Setup for bq24731EVM.....	7
3	The Waveforms at No Load	9
4	Test Setup for bq24730EVM	10
5	Test Setup for bq24731EVM	10
6	The Waveforms at I _{bat} = 3 A.....	11
7	The Waveforms at I _{bat} = 300 mA.....	12
8	The Waveforms at I _{bat} = 4000 mA	13
9	Test Setup for bq24730EVM	14
10	Top Assembly	18
11	Bottom Assembly.....	18
12	Layer 1.....	19
13	Layer 2.....	20
14	Layer 3.....	21
15	Layer 4.....	22
16	Silk Screen	23

1 Introduction

1.1 bq24730/31EVM Features

- Evaluation module for both bq24730 and bq24731
- High-efficiency NMOS-NMOS synchronous buck charger with 300-kHz frequency
- Battery/adapter to system power selector function
- User-selectable 3-cell or 4-cell Li-ion battery voltage
- User-selectable 3-A or 4-A charge current
- AC adapter Current Limit 4.7 A
- Pin-programmable interface for control and status communications with host
- AC adapter operating range 17 V–24 V
- Charge and adapter overcurrent protection
- LED indication for control and status signals
- Test points for key signals available for testing purpose. Easy probe hook-up
- Jumpers available. Easy-to-change connections

1.2 General Description

The bq24730/31 evaluation module is a complete charger module for evaluating a multicell synchronous notebook charge and path selection solution using the bq24730/31 devices. It is designed to deliver up to 4 A of charge current to Li-ion or Li-polymer applications. The charge current can be reprogrammed by changing the current-setting resistance.

The bq24730/31 has a highly integrated battery charge controller designed to work with external host commands. The battery voltage, charge current, and other system parameters are pin-programmable.

The dynamic power management (DPM) function modifies the charge current depending on system load conditions, avoiding AC adapter overload.

High-accuracy, current-sense amplifiers enable accurate measurement of either the charge current or the AC adapter current, allowing termination of nonsmart packs and monitoring of overall system power.

The adapter isolation diode can be bypassed with an external MOSFET using a control signal provided by the bq24730/31, thus reducing overall power dissipation.

For details, see the bq24730/31 data sheet ([SLUS695](#)).

1.3 I/O Description

Jack	Description	
J1-ACGD/TS	ACGOOD (pin 19) output for bq24730; TS (pin 19) output for bq24731	
J1-GND	Ground	
J1-VBAT	Connected to battery pack	
J1-VSYS	Connected to system	
J-POS	AC adapter, positive output	
J2-GND	AC adapter, negative output	
J3-1	}DCG }AC	
J3-2		R1 negative terminal connected to VBAT
J3-3		ACP (pin 4) output
J4-1	}DCG }AC	
J-2		R2 positive terminal connected to Q2
J4-3		DCG AC R1 positive terminal connected to L1
J5-POS	ACN (pin 3) output	
J5-GND	R2 negative terminal connected to PVCC	
	External power supply, positive output	
	External power supply, negative output	

Jack		Description
J6-1	}SNS }CON	Gate of Q7
J6-2		BATDRV (pin 31) output
J6-3		Gate of Q28
J7-VREF		VREF5 (pin 15) output
J7-STAT		STAT (pin 33) output
J7-CHGEN		CHGEN (pin 1) output
J7-DPMDET		DPMDET (pin 9) output for bq24730
J7-ACGOOD/IADSLP		IADSLP (pin 17) output for bq24730; ACGOOD (pin 17) output for bq24731
J7-DGND/BATDET		DGND (pin 18) output for bq24730; BATDET (pin 18) output for bq24731
J7-LOWBAT		LOWBAT (pin 21) output
J7-CELLS		CELLS (pin 32) output
J7-ISELECT		Charge-current select signal (1 select 3A, 0 select 4A)
J7-IADAPT		IADAPT (pin 22) output
J7-IBAT		IBAT (pin 23) output
J7-GND		Ground
J8-VPUP		Pullup voltage source
J8-LED		LED pullup power line
J9-BYPASS		BYPASS (pin 8) output
J9-LED		LED drive
J10-VREF		IC reference voltage VREF5 (pin 15)
J10-VPUP		Pullup voltage source
J10-EXT		External power supply
J11-CHGEN		CHGEN (pin 1) output
J11-GND		Ground
J12-1	}731 }730	Connected to AC overcurrent limit-setting resistor (for bq24731)
J12-2		DPMDET (pin 9) output for bq24730; ACOCS (pin 9) output for bq24731
J12-3		Output terminal 4 of J7
J13-IADSLP		IADSLP (pin 17) output for bq24730
J13-GND		Ground
J14-CELLS		CELLS (pin 32) output
J14-VPUP		Pullup voltage source
J15-ISEL		Charge-current select signal (1 select 3A, 0 select 4A)
J15-GND		Ground
J16-ACDRV		ACDRV (pin 2) output
J16-LED		LED drive
J17-BATDRV		BATDRV (pin 24) output
J17-LED		LED drive
J18-1	}731 }730	ACGOOD (pin 19) output for bq24730
J18-2		Gate of Q32
J18-3		ACGOOD (pin 17) output for bq24731

1.4 Controls and Key Parameters Setting

JACK	DESCRIPTION	FACTORY SETTING	
		-001 (bq24730)	-002 (bq24731)
J3, J4	AC current amplifier input selection 1-2 (DCG) : Battery discharge current sense on R1 2-3 (AC) : AC adapter input current sense on R2	Jumper on 2-3 (AC)	Jumper on 2-3 (AC)
J6	Battery discharge path control 1-2 (SNS) : Battery discharge through sense resistor R1 when AC is removed 2-3 (CON) : Battery connected to VSYS directly when AC is removed	Jumper on 2-3 (CON)	Jumper on 2-3 (CON)
J8	The pullup power source supplies the LEDs when on. LED has no power source when off.	Jumper on	Jumper on
J9	The conduction of the bypass MOSFET is indicated by LED when on	Jumper on	Jumper on
J10	Pullup power source setting 1-2: Use external power supply as the pullup source 2-3: Use REF5 as the pullup source	Jumper on 1-2 (VPUP and EXT)	Jumper on 1-2 (VPUP and EXT)
J11	Enable charge process when on	Jumper off	Jumper off
J12	Pin 9 connection 1-2 (731) : connected to ACOCS setting resistor when using bq24731 2-3 (730) : connected to output terminal block when using bq24730	Jumper on 2-3 (730)	Jumper on 1-2 (731)
J13	Adapter current amplifier disabled when on (for bq24730 only)	Jumper on	Jumper off
J14	Select 4-cell voltage regulation when on	Jumper off	Jumper off
J15	Select 4-A charge current when on	Jumper off	Jumper off
J16	The conduction of the AC MOSFET is indicated by LED when on	Jumper on	Jumper on
J17	The conduction of the battery MOSFET is indicated by LED when on	Jumper on	Jumper on
J18	ACGOOD LED indication 1-2 (730) : connected to ACGOOD pin when using bq24730 2-3 (731) : connected to ACGOOD pin when using bq24731	Jumper on 1-2 (730)	Jumper on 2-3 (731)

1.5 Recommended Operating Conditions

			MIN	TYP	MAX	UNIT
V_{IN}	Supply voltage	Input voltage from AC adapter input	14	19.5	23	V
V_{BAT}	Battery voltage	Voltage applied at VBAT terminal of J8	7	9- 16.8	20	V
I_{AC}	Supply current	Maximum input current from AC adapter input	0		4.5	A
I_{chg}	Charge current	Battery charge current	2	3 or 4	6	A
T_J	Operating junction temperature range		0		125	°C

2 Test Summary

2.1 Definitions

This procedure details how to configure the HPA111 evaluation board. On the test procedure, the following naming conventions are followed. See the HPA111 schematic for details.

VXXX : External voltage supply name (VADP, VBT, VSBT)

LOADW: External load name (LOADR, LOADI)

V(TPyyy): Voltage at HPA111 internal test point TPyyy. For example, V(TP12) means the voltage at TP12.

V(Jxx): Voltage at HPA111 jack terminal Jxx.

V(TP(XXX)): Voltage at test point XXX. For example, V(ACDET) means the voltage at the test point which is marked as *ACDET*.

V(XXX, YYY): Voltage across point XXX and YYY.

I(JXX(YYY)): Current going out from the YYY terminal of jack XX.

Jxx(BBB): Terminal or pin BBB of jack xx

Jxx ON : HPA111 internal jumper Jxx terminals are shorted

Jxx OFF: HPA111 internal jumper Jxx terminals are open

Jxx (-YY-) ON: HPA111 internal jumper Jxx adjacent terminals marked as YY are shorted

Measure→ Check specified parameters A, B. If measured values are not within specified limits, the A,B unit under test has failed.

Observe→ A,B Observe if A, B occur. If they do not occur, the unit under test has failed.

Assembly drawings have location for jumpers, test points, and individual components.

2.2 Equipment

2.2.1 Power Supplies

Power supply #1 (PS#1): a power supply capable of supplying 20 V at 5 A is required.

Power supply #2 (PS#2): a power supply capable of supplying 5 V at 1 A is required.

Power supply #3 (PS#3): a power supply capable of supplying 5 V at 1 A is required. (*for bq24731 EVM only*)

2.2.2 Electronic Load

A 30-V/5-A electronic load

2.2.3 Kepco Load

A Kepco bipolar operational power supply/amplifier (0 V ± 36 V, 0 A ± 12 A)

Note: the Kepco load is employed to emulate a battery pack. It can be replaced by any power supply with current-sinking capability.

2.2.4 Meters

Eight Fluke 75 (equivalent or better)

Or five equivalent voltage meters and three equivalent current meters. The current meters must be able to measure 5 A + current.

2.2.5 Oscilloscopes

An oscilloscope, a single voltage probe, and a single current probe are required.

2.3 Equipment Setup

1. Set the power supply #1 for 0 VDC \pm 100 mVDC, at 5-A \pm 0.1-A current limit and then turn off supply.
2. Connect the output of power supply #1 in series with a current meter (multimeter) to J2 (POS, GND).
3. Connect a voltage meter across J2 (POS, GND).
4. Set the power supply #2 for 3.3 VDC \pm 100 mVDC, at 1-A \pm 0.1-A current limit and then turn off supply.
5. Connect the output of the power supply #2 to J5 (POS, GND).
6. Set the Kepco load for 10 VDC \pm 100 mVDC and then turn off.
7. Turn off the electronic load.
8. Connect a voltage meter across J1 (VBAT, GND).
9. Connect a voltage meter across J1 (VSYS, GND).
10. Turn on the oscilloscope.
11. Insert the voltage probe into TP47 (PH), and connect to the oscilloscope.
12. Hook up the current probe to the wire connected to L1, and connect to the oscilloscope. Set up the current probe in such a way that the current direction is from the floating pad to the big pad on the right side.
13. J3 (-AC-): ON, J4(-AC-): ON, J6 (-CON-): ON, J8: ON , J10 (VPUP, EXT): ON, J11: OFF, J14: OFF, J15: OFF, J9: ON, J16: ON, J17: ON.
14. (For bq24730 only) J12 (-730-): ON, J13: ON, J18 (-730-): ON.
15. (For bq24731 only) J12 (-731-): ON, J13: OFF, J18 (-731-): ON.
16. (For bq24731 only) Set the power supply #3 for 2.5 V \pm 100 mVDC, at 1 A \pm 0.1-A current limit and then turn off supply.
17. (For bq24731 only) Connect the output of the power supply #3 to J1 (ACGD/TS, GND).

After the preceding steps have been performed, the test setup for bq24730EVM looks like that shown in [Figure 1](#). The test setup for bq24731EVM is shown in [Figure 2](#).

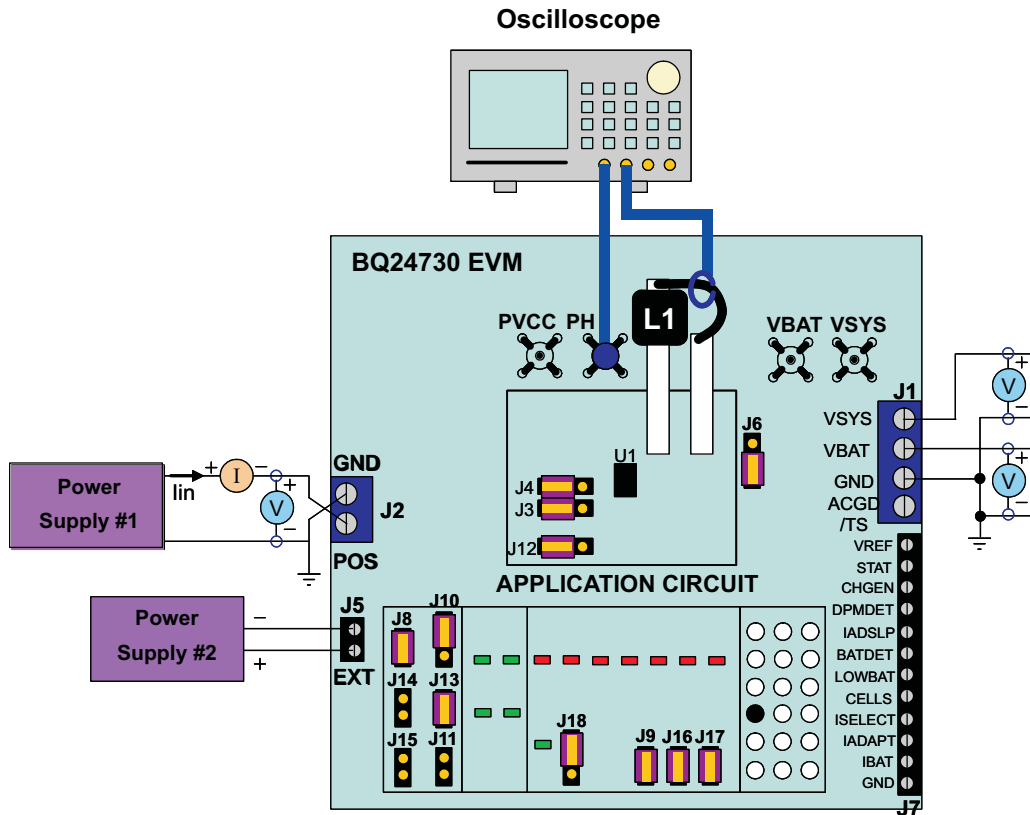


Figure 1. Original Test Setup for bq24730EVM

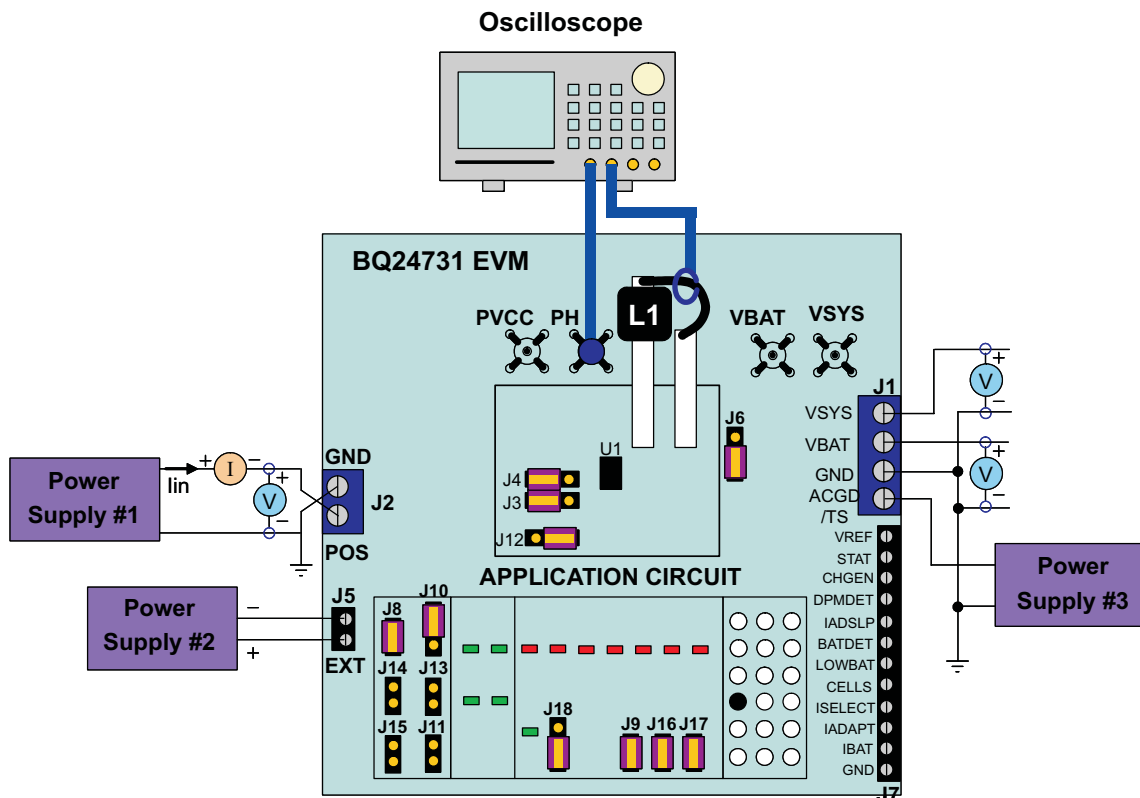


Figure 2. Original Test Setup for bq24731EVM

2.4 Procedure

2.4.1 AC Adapter Detection Threshold

1. Make sure the preceding *Equipment Setup* steps are followed. Turn on PS#2.
2. (For bq24731 only) Turn on PS#3.
3. Turn on PS#1.
 - a. Measure $\rightarrow V(J1(VSYS)) = 0\text{ V} \pm 500\text{ mV}$
 - b. Measure $\rightarrow V(TP(VREF5)) = 0\text{ V} \pm 500\text{ mV}$
4. Increase the output voltage of PS#1 until D9 (BYPASS) is on but do not exceed 20 V.
 - a. Measure $\rightarrow V(TP(AIRDET)) = 1.2\text{ V} \pm 0.1\text{ V}$
 - b. Measure $\rightarrow V(J2(POS)) = 17\text{ V} \pm 1\text{ V}$
 - c. Measure $\rightarrow V(J1(VSYS)) = 17\text{ V} \pm 1\text{ V}$
 - d. Measure $\rightarrow V(TP(VREF5)) = 5\text{ V} \pm 500\text{ mV}$
 - e. Measure $\rightarrow V(TP51) = 6\text{ V} \pm 300\text{ mV}$
 - f. Observe \rightarrow D13 (ACSW) on, D12 (BAT LOW) on, D16 (BAT ON) on. (Note: ignore D16 when the EVM is for bq24370)
5. Increase the output voltage of PS#1 until D18 (ACGOOD) on but do not exceed 20 V.
 - a. Measure $\rightarrow V(J2(POS)) = 17.5\text{ V} \pm 1\text{ V}$
 - b. Measure $\rightarrow V(TP(ACDET)) = 2.4\text{ V} \pm 0.1\text{ V}$

2.4.2 Charge Parameters Settings

1. Increase the voltage of PS#1 until $V(J2(POS)) = 19\text{ V} \pm 0.1\text{ V}$.
 - a. Measure $\rightarrow V(J1(VBAT, GND)) = 0\text{ V} \pm 1\text{ V}$
 - b. Install J11.
 - c. Observe \rightarrow D7 (CHG EN) on, D12 (BAT LOW) off, D10 (CHRGING) on.
 - d. Measure $\rightarrow V(J1(VBAT)) = 12.6\text{ V} \pm 200\text{ mV}$
 - e. Observe \rightarrow Make sure the phase node voltage (PH) and the inductor current waveforms look like [Figure 3](#).

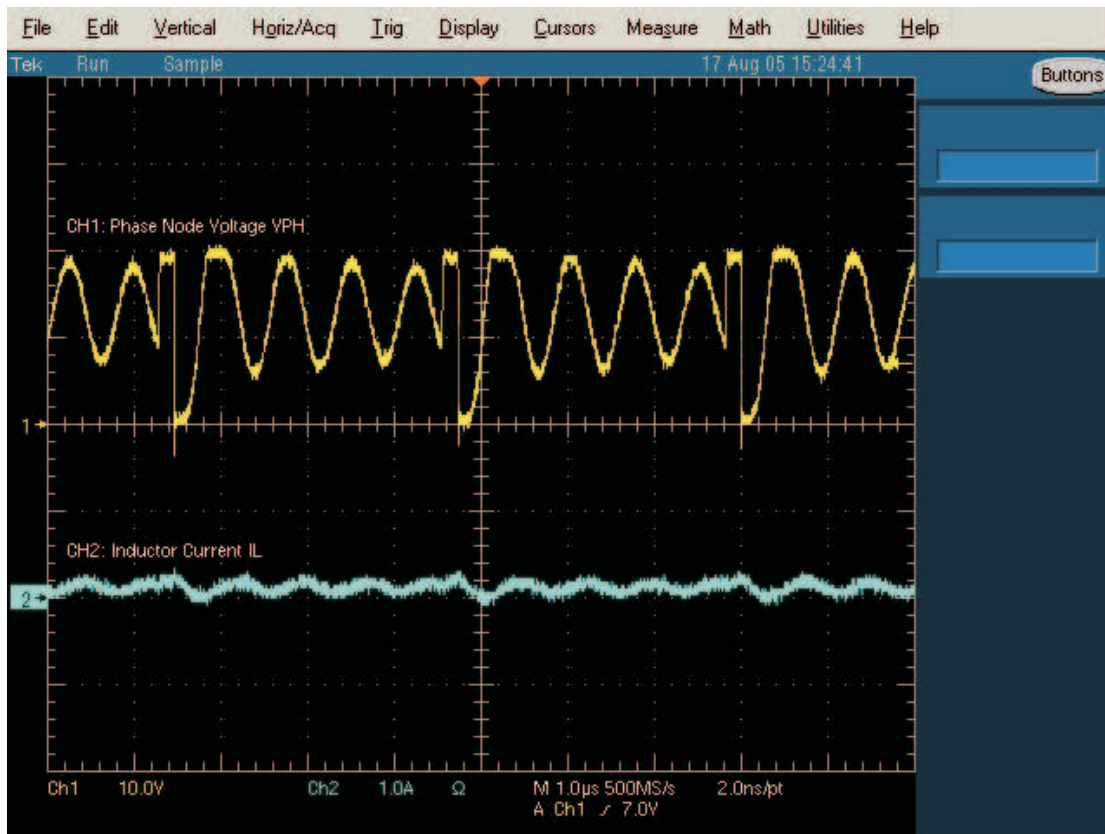


Figure 3. The Waveforms at No Load

2.4.3 Low Battery Voltage Detection

1. Uninstall J11 (disable the charging).
2. Connect the output of the Kepco load in series with a current meter (multimeter) to J1 (VBAT, GND). Make sure a voltage meter is connected across J1 (VBAT, GND). Turn on the Kepco load. Connect the output of the electronic load in series with a current meter (multimeter) to J1 (VSYS, GND). Make sure a voltage meter is connected across J1 (VSYS, GND). Turn on the power of the electronic load. Set the load current to $2\text{ A} \pm 50\text{ mA}$ but disable the output. The setup is now like [Figure 4](#) for bq24730 and like [Figure 5](#) for bq24731. Make sure $I_{bat} = 0\text{ A} \pm 10\text{ mA}$ and $I_{sys} = 0\text{ A} \pm 10\text{ mA}$.

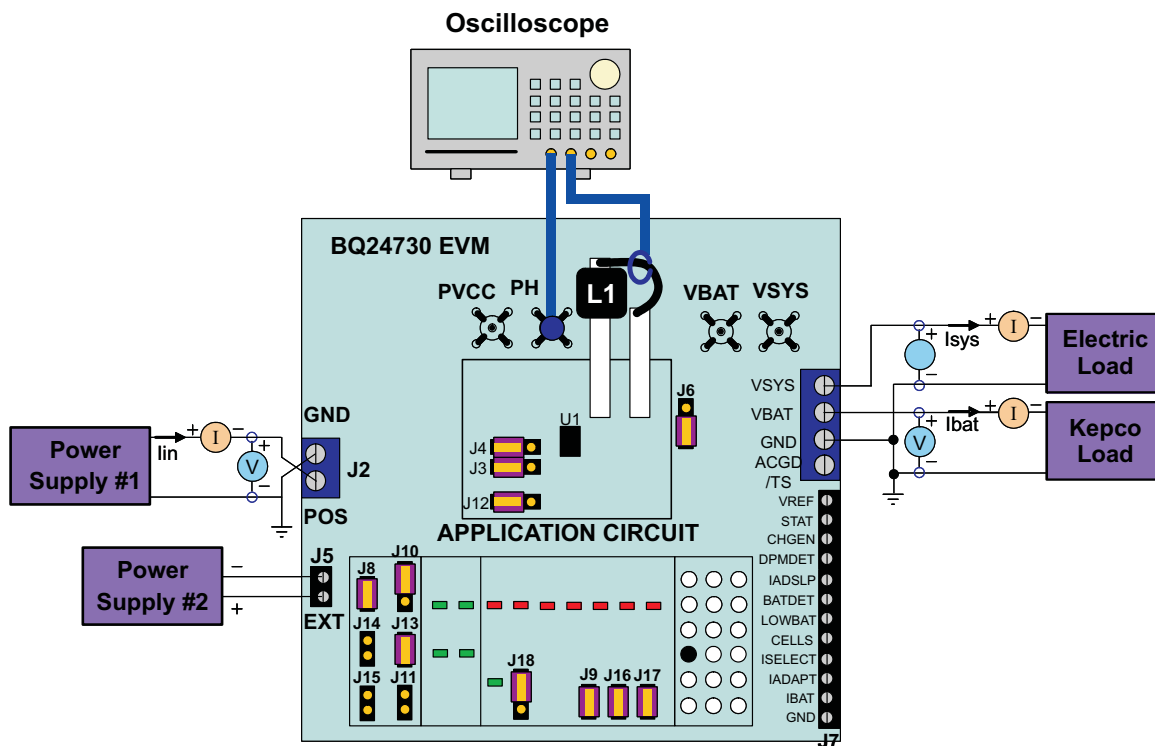


Figure 4. Test Setup for bq24730EVM

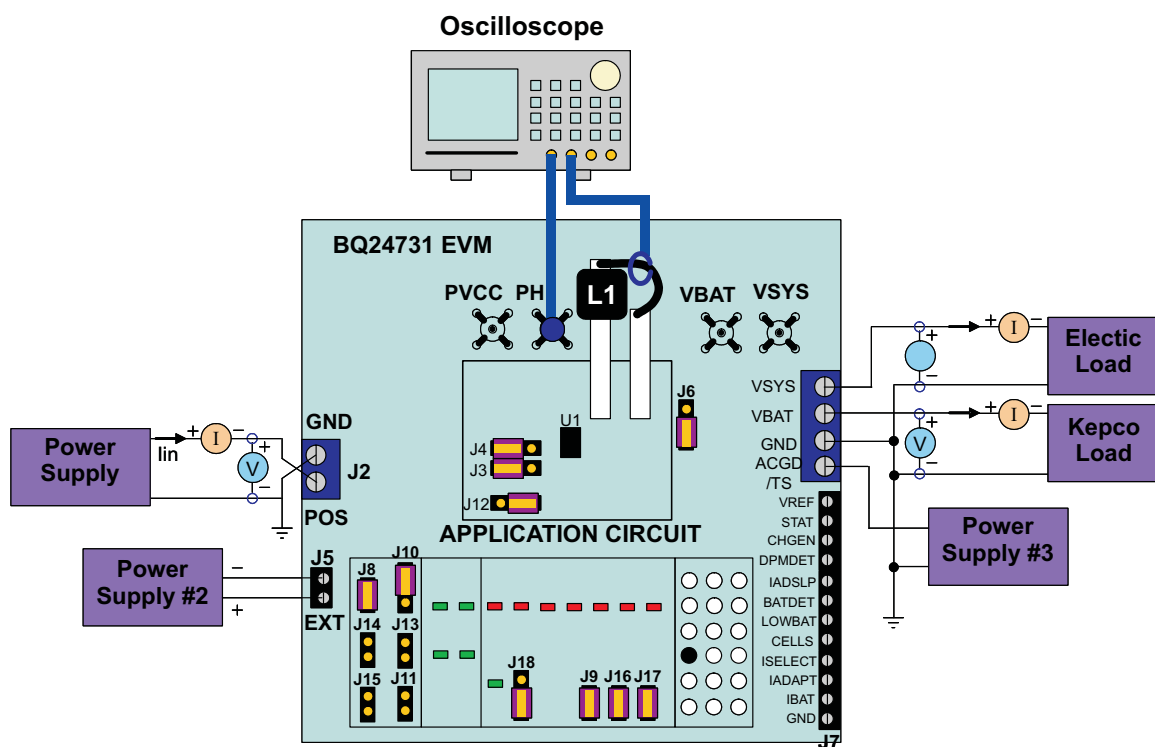


Figure 5. Test Setup for bq24731EVM

3. Slowly decrease the output voltage of the Kepco load until D12 (BAT LOW) is on.
 - a. Measure $\rightarrow V(J1(VBAT)) = 9\text{ V} \pm 200\text{ mV}$
4. Slowly increase the output voltage of the Kepco load to $10\text{ V} \pm 100\text{ mVDC}$.

- a. Observe → D12 (BAT LOW) off

2.4.4 Charge Current and AC Current Regulation (DPM)

1. Install J11 (enable the charging).
 - a. Measure → $I_{bat} = 3000 \text{ mA} \pm 200 \text{ mA}$
 - b. Observe → Make sure the phase node voltage and the inductor current waveforms look like [Figure 6](#).

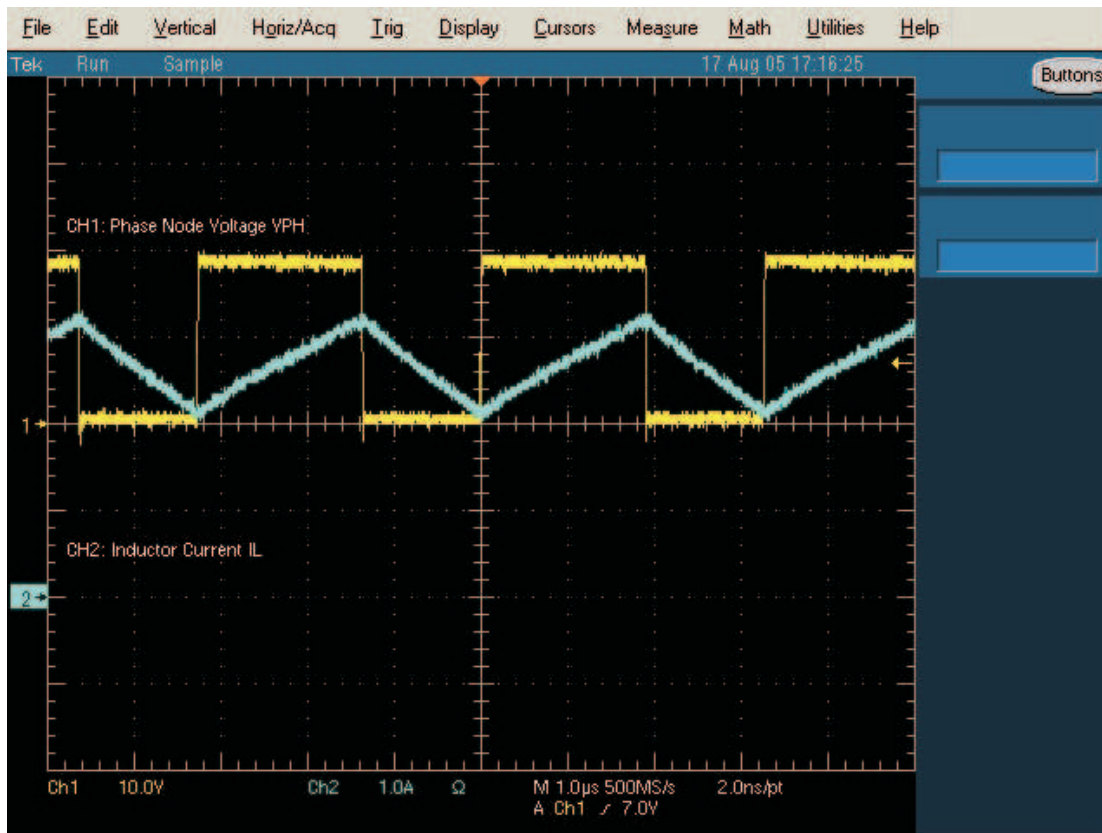


Figure 6. The Waveforms at $I_{bat} = 3 \text{ A}$

2. 2.4.4.1 Install J15 (select $I_{chrg} = 4 \text{ A}$).
 - a. Observe → D11 (HIGH I) on
 - b. Measure → $I_{bat} = 4000 \text{ mA} \pm 300 \text{ mA}$
 - c. Measure → $I_{in} = 2300 \text{ mA} \pm 300 \text{ mA}$
 - d. Measure → $V(J7(IBAT)) = 800 \text{ mV} \pm 60 \text{ mV}$
 - e. Measure → $V(J7(IADAPT)) = 460 \text{ mV} \pm 60 \text{ mV}$
3. Enable the output of the electronic load.
 - a. Measure → $I_{sys} = 2000 \text{ mA} \pm 200 \text{ mA}$, $I_{bat} = 4000 \text{ mA} \pm 300 \text{ mA}$, $I_{in} = 4300 \text{ mA} \pm 300 \text{ mA}$
4. Disable the output of the electronic load. Set the load current to $3 \text{ A} \pm 50 \text{ mA}$.
5. Enable the output of the electronic load.
 - a. Observe → D8 (DPM ON) on
 - b. Measure → $I_{sys} = 3000 \text{ mA} \pm 200 \text{ mA}$, $I_{bat} = 2500 \text{ mA} \pm 300 \text{ mA}$, $I_{in} = 4700 \text{ mA} \pm 400 \text{ mA}$
6. Turn off the electronic load.
 - a. Measure → $I_{sys} = 0 \text{ A} \pm 100 \text{ mA}$, $I_{bat} = 4000 \text{ mA} \pm 200 \text{ mA}$.

Test Summary

2.4.5 Charger Cut-Off by Thermistor (*bq24731 Only*)

1. Slowly increase the output voltage of PS#3 until $I_{bat} = 0 \text{ A} \pm 10 \text{ mA}$.
 - a. Measure $\rightarrow V(J1(ACGD/TS)) = 3.675 \text{ V} \pm 300 \text{ mV}$
2. Slowly decrease the output voltage of PS#3. Charge will resume. Continue to decrease the output voltage of PS#3 slowly until $I_{bat} = 0 \text{ A} \pm 10 \text{ mA}$.
 - a. Measure $\rightarrow V(J1(ACGD/TS)) = 1.465 \text{ V} \pm 300 \text{ mV}$
3. Slowly increase the output voltage of PS#3 to $2.5 \text{ V} \pm 100 \text{ mV}$.
 - a. Measure $\rightarrow I_{bat} = 4000 \text{ mA} \pm 200 \text{ mA}$.

2.4.6 Voltage Regulation and Nonsynchronous Operation at Light Load

1. Slowly increase the output voltage of the Kepco load until $I_{bat} = 300 \text{ mA} \pm 20 \text{ mA}$
 - a. Measure $\rightarrow V(J1(VBAT, GND)) = 12.6 \text{ V} \pm 200 \text{ mV}$
 - b. Observe \rightarrow The inductor current waveform looks like that shown in [Figure 7](#). The inductor current does not drop below 0 A.

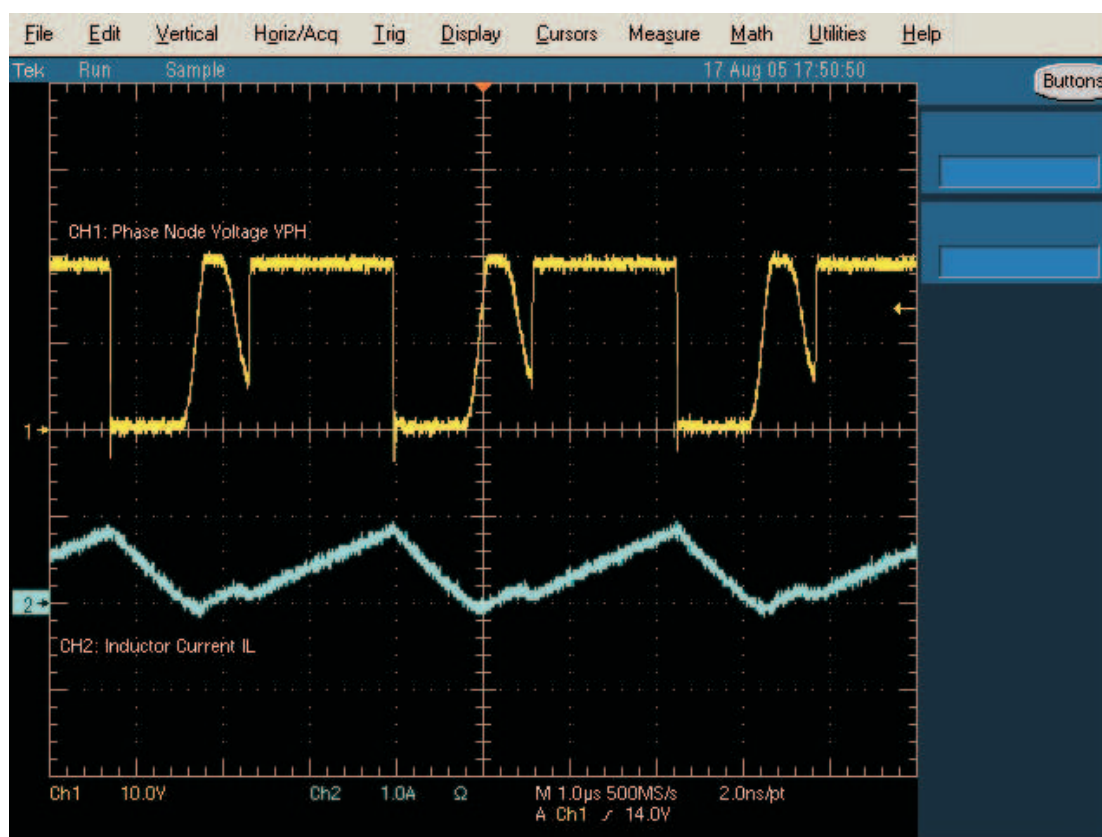


Figure 7. The Waveforms at $I_{bat} = 300 \text{ mA}$

2. Install J14 (4-cell battery pack selected)
 - a. Observe \rightarrow D14 (4 CELLS) on
 - b. Measure $\rightarrow I_{bat} = 4000 \text{ mA} \pm 200 \text{ mA}$.
 - c. Observe \rightarrow The inductor current waveform looks like that shown in [Figure 8](#).

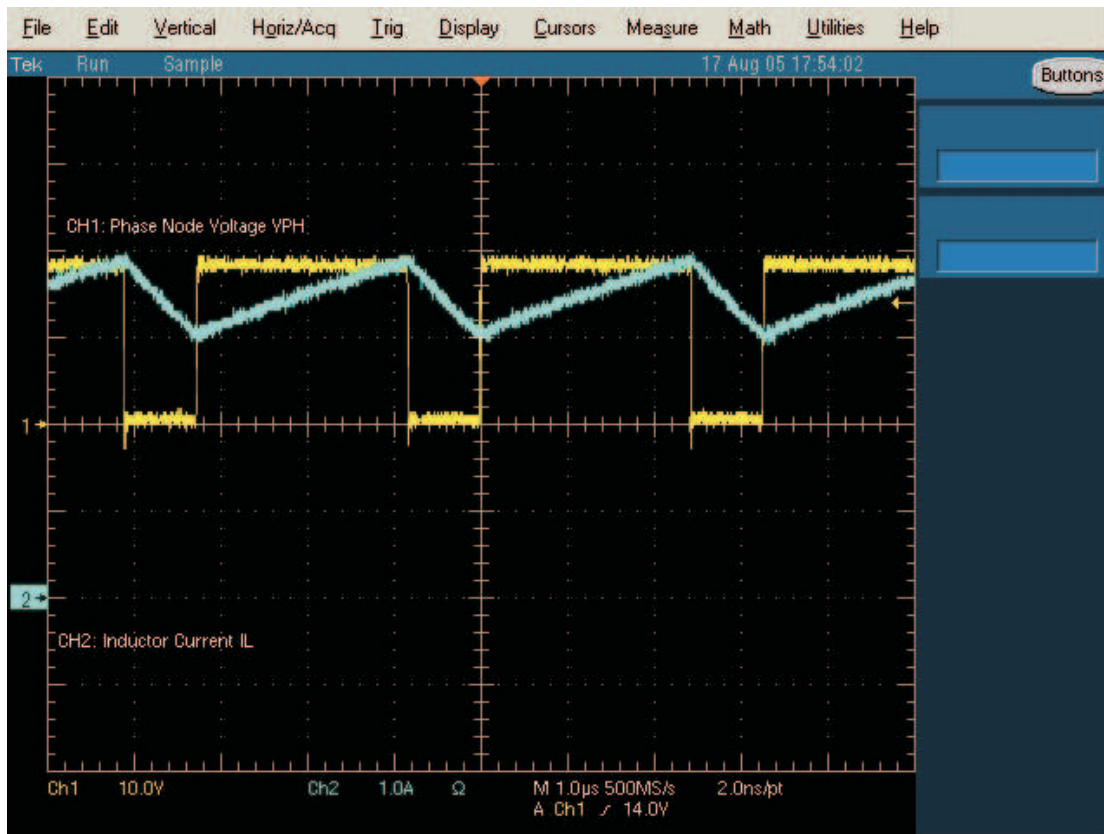


Figure 8. The Waveforms at $I_{bat} = 4000 \text{ mA}$

3. Slowly increase the output voltage of the Kepco load until $I_{bat} = 300 \text{ mA} \pm 20 \text{ mA}$
 - a. Measure $\rightarrow V(J1(VBAT, GND)) = 16.8 \text{ V} \pm 200 \text{ mV}$

2.4.7 Power Path Selection

1. Uninstall J11 (disable the charging).
2. Slowly decrease the voltage of the Kepco load to $12.5 \text{ V} \pm 0.1 \text{ V}$.
 - a. Measure $\rightarrow V(J1(VSYS)) = 19 \text{ V} \pm 1 \text{ V}$ (adapter connected to system)
 - b. Observe $\rightarrow D9$ (BYPASS) on, $D13$ (ACSW ON) on, $D17$ (BATDRV ON) off.
3. Turn off PS#1.
 - a. Measure $\rightarrow V(J1(VSYS)) = 12.5 \text{ V} \pm 200 \text{ mV}$ (battery connected to system)
 - b. Observe $\rightarrow D9$ (BYPASS) off, $D13$ (ACSW ON) off, $D17$ (BATDRV ON) on

2.4.8 Battery Discharge Current Sense (*bq24730 Only*)

1. Measure $\rightarrow V(J7(IADAPT)) = 0 \text{ mV} \pm 20 \text{ mV}$
2. Set the electronic load current to $1 \text{ A} \pm 50 \text{ mA}$. Enable the output of the electronic load.
 - a. Measure $\rightarrow I_{bat} = -1000 \text{ mA} \pm 200 \text{ mA}$.
 - b. Measure $\rightarrow V(J7(IADAPT)) = 0 \text{ mV} \pm 20 \text{ mV}$
3. Disable the output of the electronic load. The jumpers are installed as:
 - a. $J3$ (-DCG-) on, $J4$ (-DCG-) on, $J13$ off, $J6$ (-SNS-) on.
 - b. The setup is now like that shown in [Figure 9](#).

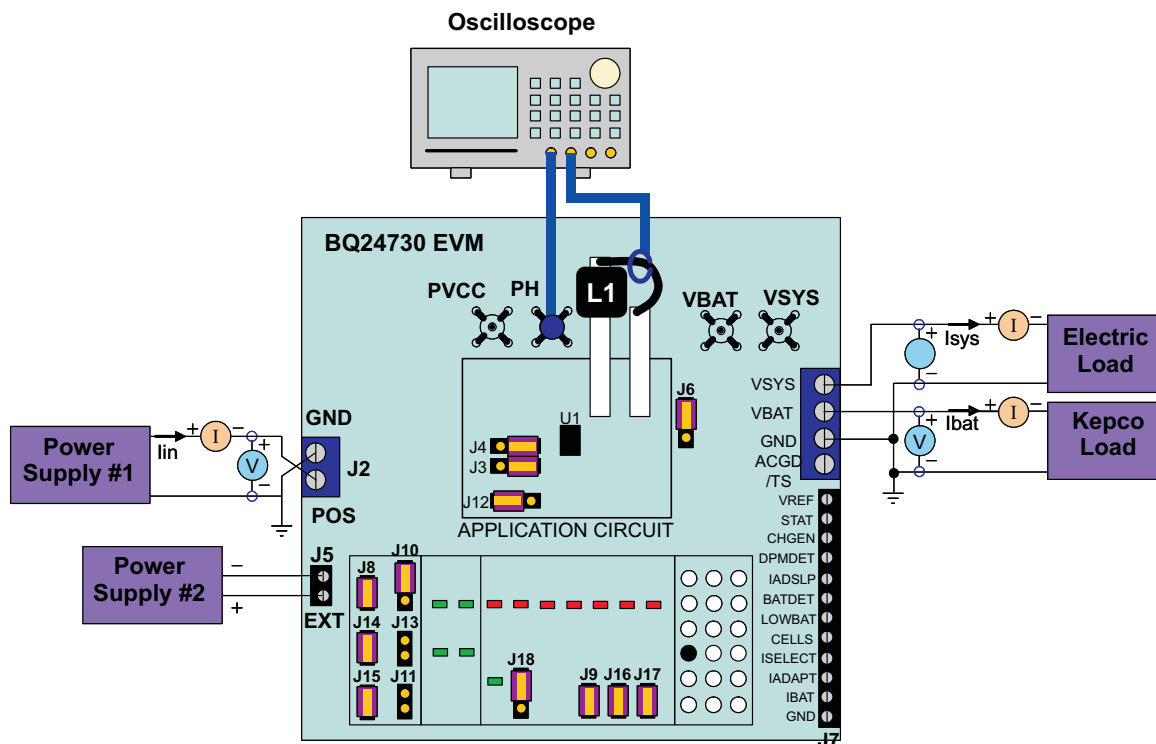


Figure 9. Test Setup for bq24730EVM

4. Enable the output of the electronic load.
 - a. Observe → D15 (IAD EN) on (the input current amplifier is activated).
 - b. Measure → $I_{bat} = -1000 \text{ mA} \pm 200 \text{ mA}$.
 - c. Measure → $V(J7(IADAPT)) = 200 \text{ mV} \pm 50 \text{ mV}$

3 Circuit Design and Layout Guideline

3.1 Optional Components

The bq24730/31EVM has all components required for robust operation on a wide range of different operating conditions and AC adapter/load transients. However, some of its components might not be required or can be of distinct value, depending on the application condition. See bq24730/31 application documents for details.

Component	When it must be added to application circuit
D2/R6	Turnon time for bypass switch Q2 needs to be increased
D4/R8	Turnon time for AC switch Q3 needs to be increased
D6/R14	Turnon time for battery switch Q7 or Q28 needs to be increased
C13/C15	Switching time for AC switch Q3 needs to be increased
R9/R10 (See note 1)	Switching time for switch Q1 needs to be increased
R11	Switching time for switch Q5 needs to be increased
C1/C2/C3/C4 value	These capacitors (or some of them) are always required for PWM ripple current filtering. Value might be decreased as long as the low-current ripple, low-transient voltage spike, and loop-response stability can be specified.

3.2 Layout Tips

1. The control stage and the power stage should be laid out separately. At each layer, the signal ground and the power ground are connected only at the power pad with a single point underneath the IC.
2. AC current-sense resistor must be connected to ACP (pin 4) and ACN (pin 3) by Kelvin contact. The area of this loop must be minimized. The decoupling capacitors for these pins should be placed as close to the IC as possible.
3. Charge current-sense resistor must be connected to SRP (pin 27), SRN (pin 26), SYNPN (pin 29), and SYNPN (pin 28) by Kelvin contact. The area of this loop must be minimized. The decoupling capacitors for these pins should be placed as close to the IC as possible.
4. Decoupling capacitors for VCC (pin 16), VREF5 (pin 15), and REGN (pin 36) should be placed underneath the IC (on the bottom layer) and make the interconnections to the IC as short as possible.
5. Decoupling capacitors for BAT (pin 25), IBAT (pin 23), and IADAPT (pin 22) must be placed close to the corresponding IC pins and make the interconnections to the IC as short as possible.
6. C13 and C15, if used, must be placed as close to Q3 (AC switch) as possible.
7. Decoupling capacitor C12 for the charger input must be placed close to the Q1 drain and Q5 source.

4 Bill of Materials, Board Layout, and Schematics

4.1 Bill of Materials

bq24730-001	bq24731-002	RefDes	Value	Description	Size	Part Number	MFR
4	4	C1–C4	10 μ F	Capacitor, Ceramic, 10- μ F, 25-V, X5R, 20%	1206	ECJ-3YB1E106M	Panasonic - ECG
0	0	C13	Open	Capacitor, Ceramic, Open, 50-V, X7R, 10%	0603		
1	1	C15	10nF	Capacitor, Ceramic, 0.01- μ F, 50-V, X7R, 10%	0603	C0603C103K5RACTU	Kemet
2	2	C16, C28	4.7 μ F	Capacitor, Ceramic, 4.7- μ F, 50-V, X7R, 10%	1210	GRM32ER71H475KA88L	Murata
2	2	C17, C24	1 μ F	Capacitor, Ceramic, 1- μ F, 25-V, X7R, 10%	0805	C2012X7R1E105K	TDK
4	4	C19, C33–C35	0.1 μ F	Capacitor, Ceramic, 50V, X7R, 10%	0603	GRM188R71H104KA93D	Murata
1	1	C20	43pF	Capacitor, Ceramic, 43-pF, 50-V, C0G, 5%	0603	GRM1885C1H430JA01D	Murata
1	1	C21	2000pF	Capacitor, Ceramic, 2000pF, 50-V, C0G, 5%	0805	GRM2165C1H202JA01D	Murata
1	1	C22	160pF	Capacitor, Ceramic, 160-pF, 50-V, C0G, 5%	0603	GRM1885C1H161JA01D	Murata
13	13	C5, C8, C12, C14, C18, C23, C25–C27, C29–C32	0.1 μ F	Capacitor, Ceramic, 0.1- μ F, 50-V, X7R, 10%	0805	C0805C104K5RACTU	Kemet
7	7	C6, C7, C9–C11, C36, C37	10 μ F	Capacitor, Ceramic, 50V, F, 20%/80%	1210	ECJ-4YF1H106Z	Panasonic - ECG
1	1	D1	MBRS130TR	Diode, Schottky, 1A, 30V	SMB	MBRS130TR	IR
3	3	D2, D4, D6	BAS16	Diode, Switching, 10-mA, 85-V, 350-mW	SOT23	BAS16	Vishay-Liteon
1	1	D3	BAT54	Diode, Schottky, 200-mA, 30-V	SOT23	BAT54	Vishay-Liteon
1	1	D5	BAT54C	Diode, Dual Schottky, 200-mA, 30-V	SOT23	BAT54C	Vishay-Liteon
5	5	D7, D11, D14, D15, D18	Green	Diode, LED, Green, 2.1-V, 20-mA, 6-mcd	0603	160-1183-1-ND	Liteon

Bill of Materials, Board Layout, and Schematics

bq24730-001	bq24731-002	RefDes	Value	Description	Size	Part Number	MFR
7	7	D8–D10, D12, D13, D16, D17	Red	Diode, LED, Red, 1.8-V, 20-mA, 20-mcd	0603	160-1181-1-ND	Liteon
1	1	J1	ED1516	Terminal Block, 4-pin, 15-A, 5,1mm	0.80 × 0.35	ED2227	OST
3	3	J10, J12, J18	PTC36SAAN	Header, 3-pin, 100mil spacing, (36-pin strip)	0.100 × 3	PTC36SAAN	Sullins
1	1	J2	ED1609-ND	Terminal Block, 2-pin, 15-A, 5,1mm	0.40 × 0.35	ED1609	OST
3	3	J3, J4, J6		Header, 3-pin, 100mil spacing, (36-pin strip)	0.100 × 3	PTC36SAAN	Sullins
1	1	J5		Terminal Block, 2-pin, 6-A, 3,5mm	0.27 × 0.25	ED1514	OST
1	1	J7	ED1524-ND	Terminal Block, 12-pin, 6-A, 3,5mm	1.65 × 0.250	ED1524-ND	OST
8	8	J8, J9, J11, J13–J17	PTC36SAAN	Header, 2-pin, 100mil spacing, (36-pin strip)	0.100 × 2	PTC36SAAN	Sullins
1	1	L1	15μH	Inductor, SMT, 5-A, 25-mΩ	0.492 sq in	DR127-150	Coiltronics
2	2	Q1, Q5	FDS6680A	Transistor, MOSFET, NChan, 30V, 12.5A, Rds 9.5 mΩ	SO8	FDS6680A	Fairchild
3	3	Q13, Q20, Q30	TP0610K	MOSFET, P-Ch, 60V, Rds 6Ω, Id 185 mA	SOT-23	TP0610K	Vishay-Siliconix
4	4	Q2, Q3, Q7, Q28	Si4435DY	MOSFET, P-ch, 30-V, 8.0-A, 20-mΩ	SO8	Si4435DY	Siliconix
20	20	Q8–Q12, Q14–Q19, Q21–Q27, Q29, Q32	2N7002	MOSFET, N-ch, 60-V, 115-mA, 1.2-Ω	SOT23	2N7002DICT	Vishay-Liteon
2	2	R1, R2	0.01	Resistor, Chip, 0.010-Ω, 1/2-W, 1%	2010	WSL2010.010±1%	Vishay- Dale
1	1	R15	28k	Resistor, Chip, 28k-Ω, 1/16-W, 1%	0603	Std	Std
1	1	R16	6k	Resistor, Chip, 1/16W, 1%	0603	Std	Std
1	1	R17	100k	Resistor, Chip, 1/16W, 1%	0603	Std	Std
1	1	R18	30k	Resistor, Chip, 30k-Ohms, 1/16-W, 1%	0603	Std	Std
1	1	R19	24.9k	Resistor, Chip, 1/16W, 1%	0603	Std	Std
1	1	R20	200k	Resistor, Chip, 1/16W, 1%	0603	Std	Std
14	14	R22, R30–R35, R37, R38, R41, R45, R52, R57, R62	20k	Resistor, Chip, 20k-Ω, 1/16-W, 5%	0603	Std	Std
1	1	R23	300k	Resistor, Chip, 1/16W, 1%	0603	Std	Std
1	1	R24	49.9k	Resistor, Chip, 1/16W, 1%	0603	Std	Std
2	2	R25, R27	1k	Resistor, Chip, 1kΩ, 1/16-W, 5%	0603	Std	Std
1	1	R26	21k	Resistor, Chip, 1/16W, 1%	0603	Std	Std
1	1	R28	33.2k	Resistor, Chip, 1/16W, 1%	0603	Std	Std
1	1	R29	5.62k	Resistor, Chip, 1/16W, 1%	0603	Std	Std
1	1	R3	365k	Resistor, Chip, 365k-Ohms, 1/16-W, 1%	0603	Std	Std
0	1	R36	118k	Resistor, Chip, 1/16W, 1%	0603	Std	Std
1	1	R37	48.7k	Resistor, Chip, 48.7kΩ, 1/16-W, 1%	0603	Std	Std
9	9	R39, R40, R47, R49, R51, R53, R54, R58, R65	1.5k	Resistor, Chip, 1.5kΩ, 1/16-W, 5%	0603	Std	Std
0	0	R4	Open	Resistor, Chip, Open, 1/16-W, 5%	0603	Std	Std
3	3	R42, R50, R59	2.2k	Resistor, Chip, 2.2kΩ, 1/16-W, 5%	0603	Std	Std
1	1	R44	10k	Resistor, Chip, 1/16W, 1%	0603	Std	Std
1	1	R46	20k	Resistor, Chip, 20kΩ, 1/16-W, 1%	0603	Std	Std

bq24730-001	bq24731-002	RefDes	Value	Description	Size	Part Number	MFR
10	10	R5, R12, R13, R21, R43, R48, R55, R56, R60, R61	100k	Resistor, Chip, 100kΩ, 1/16-W, 5%	0603	Std	Std
5	5	R6, R8, R10, R11, R14	0	Resistor, Chip, 0Ω, 1/16-W, 5%	0603	Std	Std
1	1	R63	0	Resistor, Chip, 1/16W, 5%	0402	Std	Std
1	1	R64	5.1k	Resistor, Chip, 5.1kΩ, 1/16-W, 5%	0603	Std	Std
1	1	R9	15	Resistor, Chip, 15Ω, 1/16-W, 5%	0603	Std	Std
14	14	SJ1-SJ14	929950-00	Shorting jumper, 2-pin, 100mil spacing		929950-00	3M/ESD
4	4			6-32 NYL nuts			
4	4	ST1-ST4	4816	STANDOFF M/F HEX 6-32 NYL 0.500"	sf_thvt_325_rnd	4816	Keystone
22	22	TP1, TP2, TP5-TP10, TP12-TP22, TP43, TP46, TP55	5002	Test Point, White, Thru Hole Color Keyed	0.100 × 0.100	5002	Keystone
4	4	TP11, TP40, TP44, TP48	5001	Test Point, Black, Thru Hole Color Keyed	0.100 × 0.100	5001	Keystone
0	0	TP4, TP23-TP36, TP38, TP39, TP41, TP42, TP45, TP50, TP51, TP52		Test Point, 0.020 Hole			
4	4	TP47, TP49, TP53, TP54		Adaptor, 3.5-mm probe clip (or 131-5031-00)	0.2	131-4244-00	
1	0	U1	bq24730RGF	IC, Advance Multi Cell Synchronous Notebook Charger and SPS	0.242 × 0.242	bq24730RGF	TI
0	1	U1	bq24731RGF	IC, Advance Multi Cell Synchronous Notebook Charger and SPS	0.242 × 0.242	bq24731RGF	TI

4.2 Board Layout

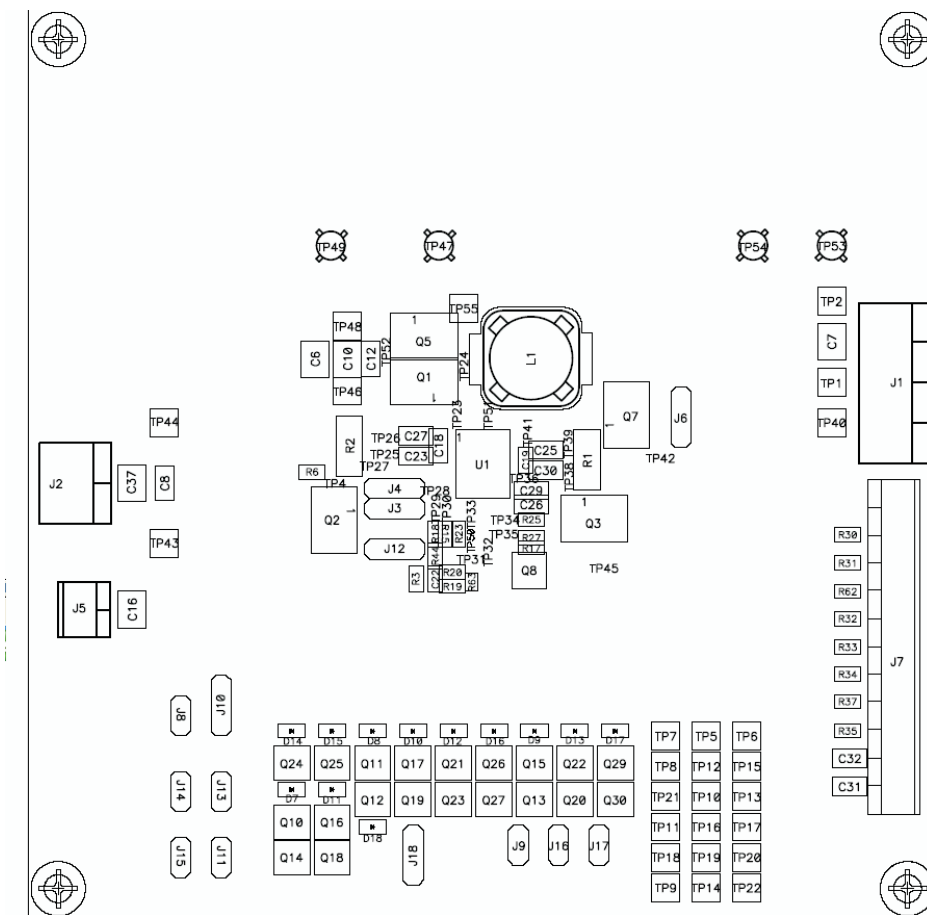


Figure 10. Top Assembly

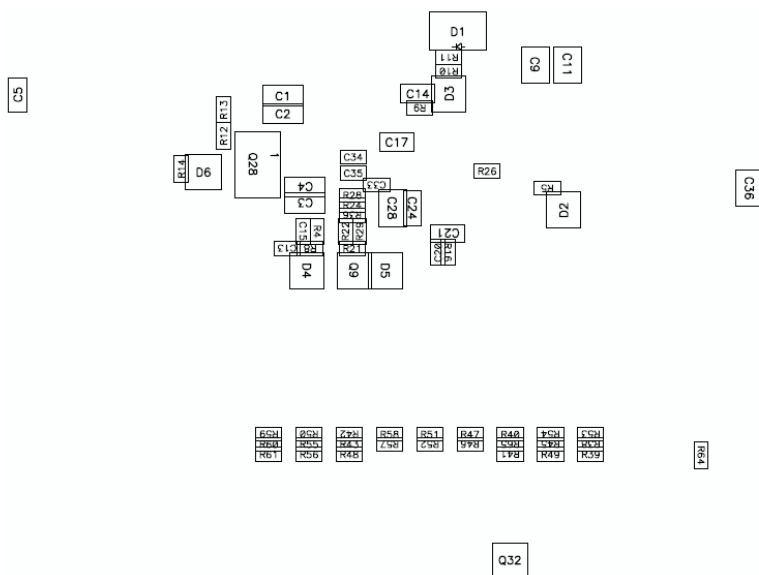


Figure 11. Bottom Assembly

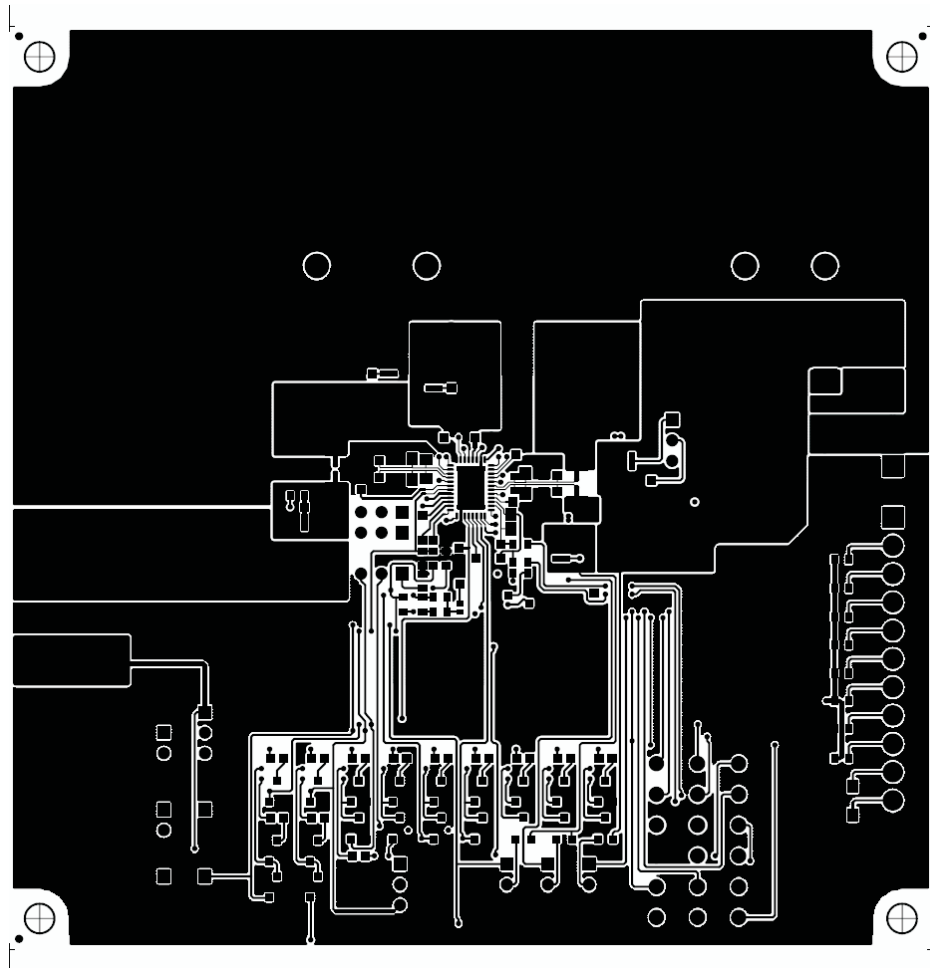


Figure 12. Layer 1

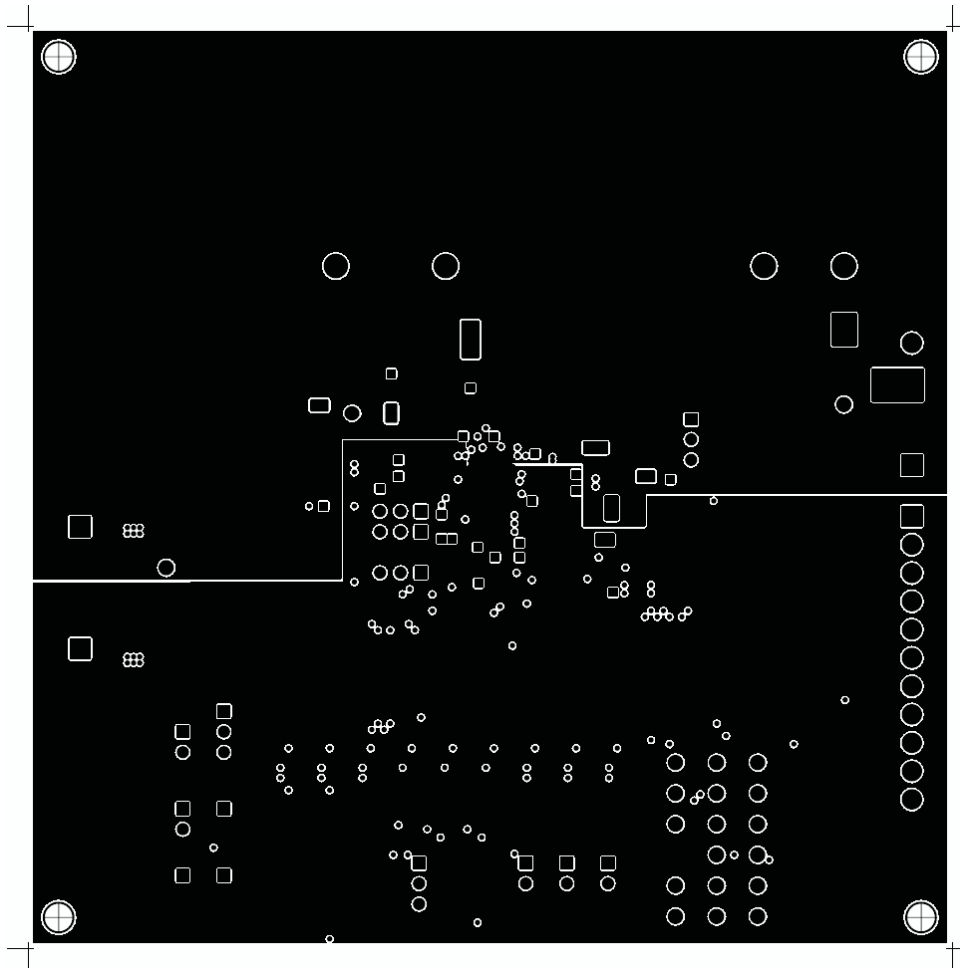


Figure 13. Layer 2

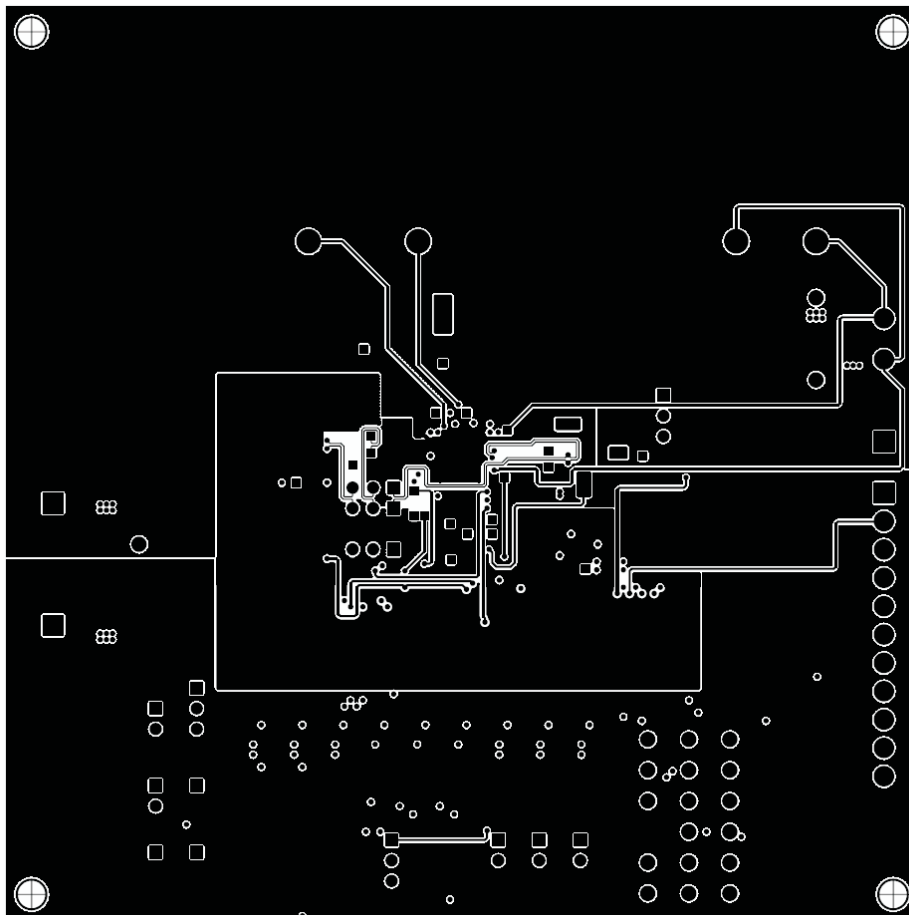


Figure 14. Layer 3

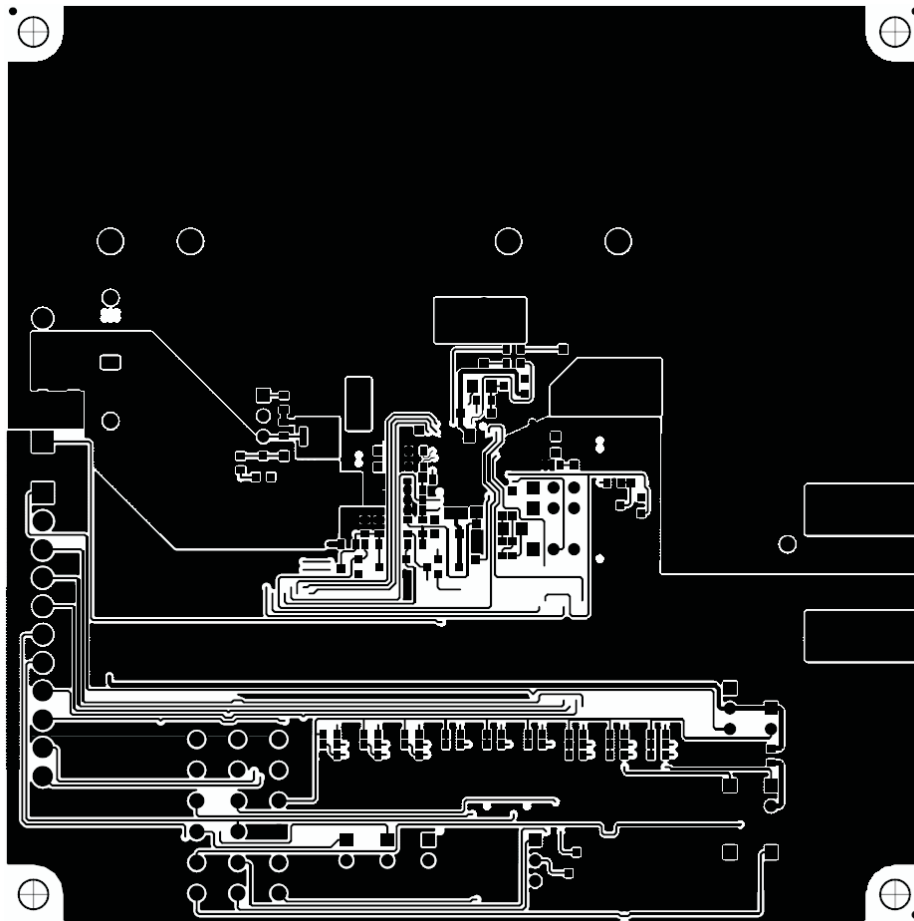


Figure 15. Layer 4

BQ24730/31 EVALUATION BOARD

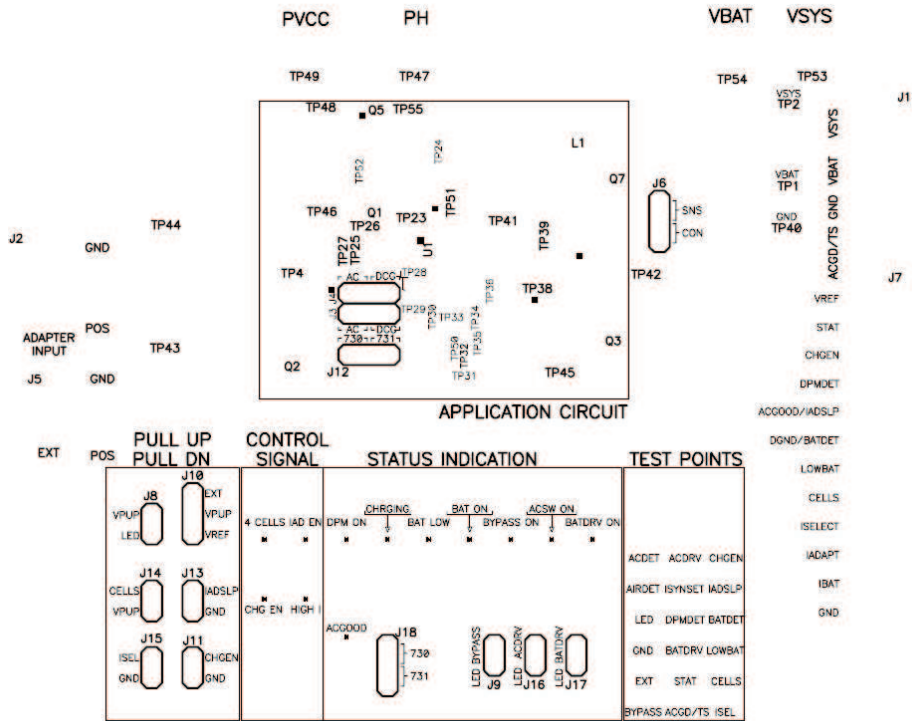
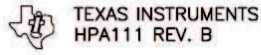
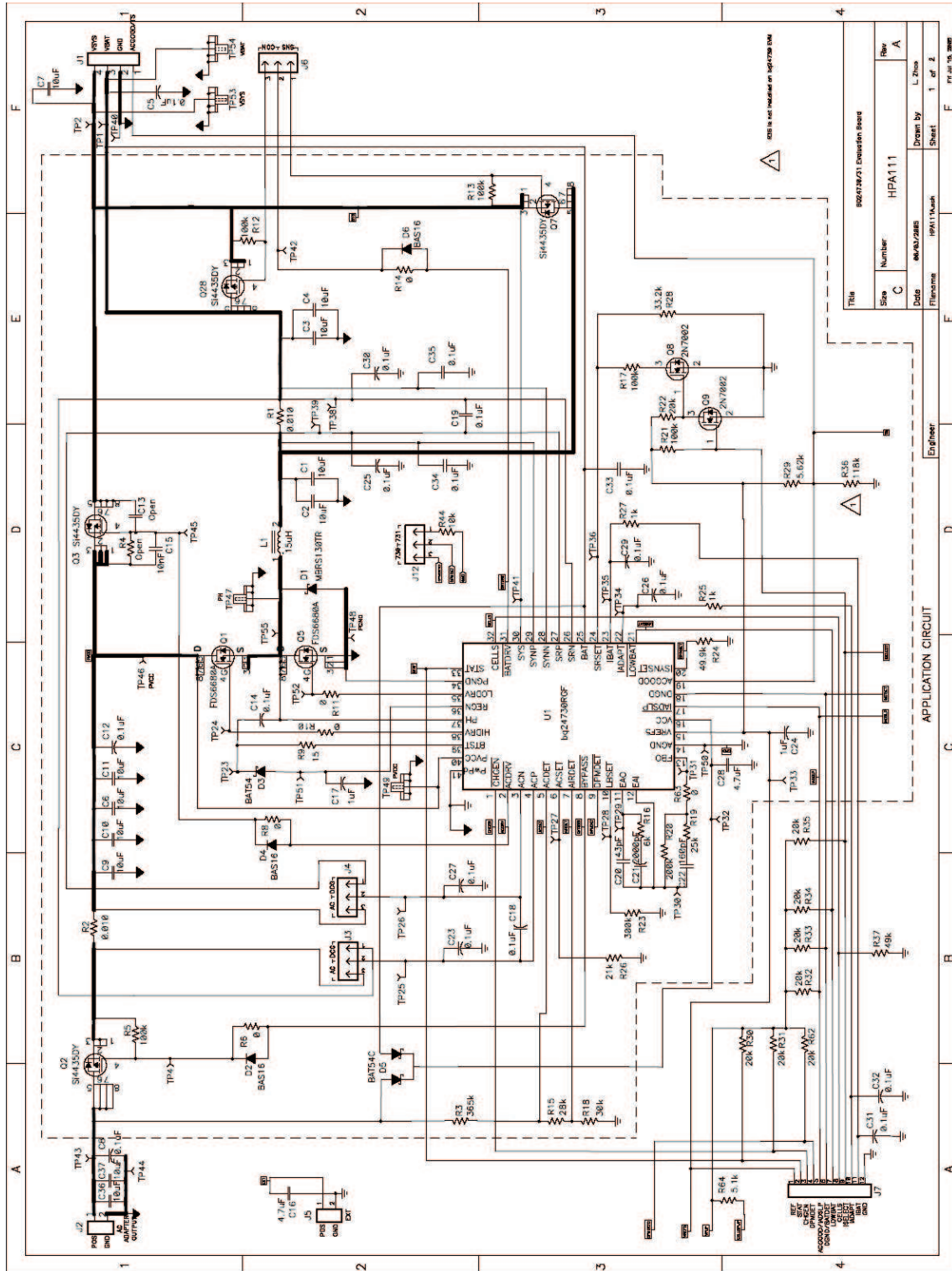
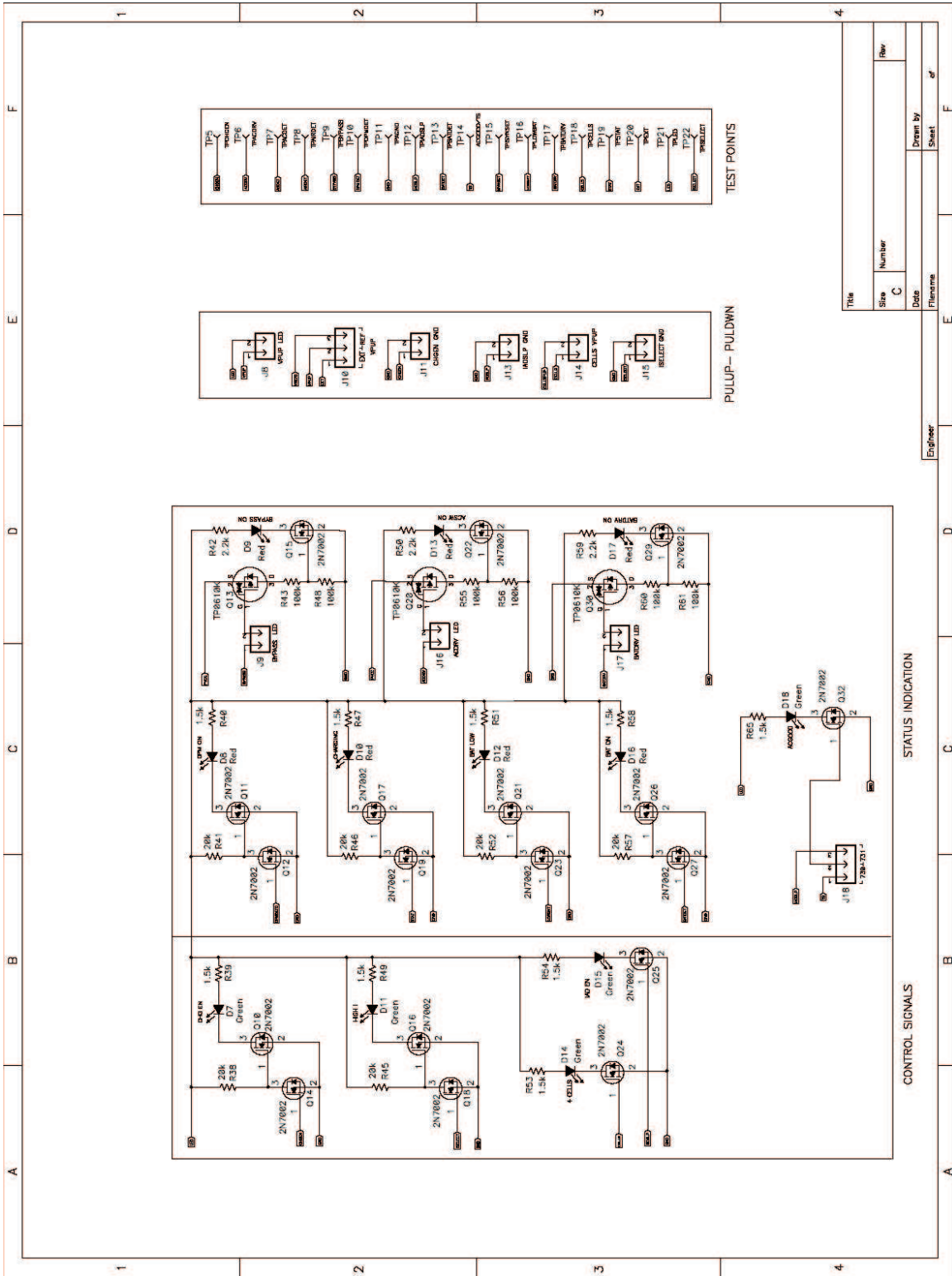


Figure 16. Silk Screen

4.3 Schematics

The schematics are shown on the following pages.





EVALUATION BOARD/KIT IMPORTANT NOTICE

Texas Instruments (TI) provides the enclosed product(s) under the following conditions:

This evaluation board/kit is intended for use for **ENGINEERING DEVELOPMENT, DEMONSTRATION, OR EVALUATION PURPOSES ONLY** and is not considered by TI to be a finished end-product fit for general consumer use. Persons handling the product(s) must have electronics training and observe good engineering practice standards. As such, the goods being provided are not intended to be complete in terms of required design-, marketing-, and/or manufacturing-related protective considerations, including product safety and environmental measures typically found in end products that incorporate such semiconductor components or circuit boards. This evaluation board/kit does not fall within the scope of the European Union directives regarding electromagnetic compatibility, restricted substances (RoHS), recycling (WEEE), FCC, CE or UL, and therefore may not meet the technical requirements of these directives or other related directives.

Should this evaluation board/kit not meet the specifications indicated in the User's Guide, the board/kit may be returned within 30 days from the date of delivery for a full refund. **THE FOREGOING WARRANTY IS THE EXCLUSIVE WARRANTY MADE BY SELLER TO BUYER AND IS IN LIEU OF ALL OTHER WARRANTIES, EXPRESSED, IMPLIED, OR STATUTORY, INCLUDING ANY WARRANTY OF MERCHANTABILITY OR FITNESS FOR ANY PARTICULAR PURPOSE.**

The user assumes all responsibility and liability for proper and safe handling of the goods. Further, the user indemnifies TI from all claims arising from the handling or use of the goods. Due to the open construction of the product, it is the user's responsibility to take any and all appropriate precautions with regard to electrostatic discharge.

EXCEPT TO THE EXTENT OF THE INDEMNITY SET FORTH ABOVE, NEITHER PARTY SHALL BE LIABLE TO THE OTHER FOR ANY INDIRECT, SPECIAL, INCIDENTAL, OR CONSEQUENTIAL DAMAGES.

TI currently deals with a variety of customers for products, and therefore our arrangement with the user **is not exclusive**.

TI assumes **no liability for applications assistance, customer product design, software performance, or infringement of patents or services described herein.**

Please read the User's Guide and, specifically, the Warnings and Restrictions notice in the User's Guide prior to handling the product. This notice contains important safety information about temperatures and voltages. For additional information on TI's environmental and/or safety programs, please contact the TI application engineer or visit www.ti.com/esh.

No license is granted under any patent right or other intellectual property right of TI covering or relating to any machine, process, or combination in which such TI products or services might be or are used.

FCC Warning

This evaluation board/kit is intended for use for **ENGINEERING DEVELOPMENT, DEMONSTRATION, OR EVALUATION PURPOSES ONLY** and is not considered by TI to be a finished end-product fit for general consumer use. It generates, uses, and can radiate radio frequency energy and has not been tested for compliance with the limits of computing devices pursuant to part 15 of FCC rules, which are designed to provide reasonable protection against radio frequency interference. Operation of this equipment in other environments may cause interference with radio communications, in which case the user at his own expense will be required to take whatever measures may be required to correct this interference.

EVM WARNINGS AND RESTRICTIONS

It is important to operate this EVM within the input voltage range of 0 V to 24 V and the output voltage range of 0 V to 20 V.

Exceeding the specified input range may cause unexpected operation and/or irreversible damage to the EVM. If there are questions concerning the input range, please contact a TI field representative prior to connecting the input power.

Applying loads outside of the specified output range may result in unintended operation and/or possible permanent damage to the EVM. Please consult the EVM User's Guide prior to connecting any load to the EVM output. If there is uncertainty as to the load specification, please contact a TI field representative.

During normal operation, some circuit components may have case temperatures greater than 50°C. The EVM is designed to operate properly with certain components above 50°C as long as the input and output ranges are maintained. These components include but are not limited to linear regulators, switching transistors, pass transistors, and current sense resistors. These types of devices can be identified using the EVM schematic located in the EVM User's Guide. When placing measurement probes near these devices during operation, please be aware that these devices may be very warm to the touch.

Mailing Address: Texas Instruments, Post Office Box 655303, Dallas, Texas 75265
Copyright © 2006, Texas Instruments Incorporated

IMPORTANT NOTICE

Texas Instruments Incorporated and its subsidiaries (TI) reserve the right to make corrections, modifications, enhancements, improvements, and other changes to its products and services at any time and to discontinue any product or service without notice. Customers should obtain the latest relevant information before placing orders and should verify that such information is current and complete. All products are sold subject to TI's terms and conditions of sale supplied at the time of order acknowledgment.

TI warrants performance of its hardware products to the specifications applicable at the time of sale in accordance with TI's standard warranty. Testing and other quality control techniques are used to the extent TI deems necessary to support this warranty. Except where mandated by government requirements, testing of all parameters of each product is not necessarily performed.

TI assumes no liability for applications assistance or customer product design. Customers are responsible for their products and applications using TI components. To minimize the risks associated with customer products and applications, customers should provide adequate design and operating safeguards.

TI does not warrant or represent that any license, either express or implied, is granted under any TI patent right, copyright, mask work right, or other TI intellectual property right relating to any combination, machine, or process in which TI products or services are used. Information published by TI regarding third-party products or services does not constitute a license from TI to use such products or services or a warranty or endorsement thereof. Use of such information may require a license from a third party under the patents or other intellectual property of the third party, or a license from TI under the patents or other intellectual property of TI.

Reproduction of information in TI data books or data sheets is permissible only if reproduction is without alteration and is accompanied by all associated warranties, conditions, limitations, and notices. Reproduction of this information with alteration is an unfair and deceptive business practice. TI is not responsible or liable for such altered documentation.

Resale of TI products or services with statements different from or beyond the parameters stated by TI for that product or service voids all express and any implied warranties for the associated TI product or service and is an unfair and deceptive business practice. TI is not responsible or liable for any such statements.

TI products are not authorized for use in safety-critical applications (such as life support) where a failure of the TI product would reasonably be expected to cause severe personal injury or death, unless officers of the parties have executed an agreement specifically governing such use. Buyers represent that they have all necessary expertise in the safety and regulatory ramifications of their applications, and acknowledge and agree that they are solely responsible for all legal, regulatory and safety-related requirements concerning their products and any use of TI products in such safety-critical applications, notwithstanding any applications-related information or support that may be provided by TI. Further, Buyers must fully indemnify TI and its representatives against any damages arising out of the use of TI products in such safety-critical applications.

TI products are neither designed nor intended for use in military/aerospace applications or environments unless the TI products are specifically designated by TI as military-grade or "enhanced plastic." Only products designated by TI as military-grade meet military specifications. Buyers acknowledge and agree that any such use of TI products which TI has not designated as military-grade is solely at the Buyer's risk, and that they are solely responsible for compliance with all legal and regulatory requirements in connection with such use.

TI products are neither designed nor intended for use in automotive applications or environments unless the specific TI products are designated by TI as compliant with ISO/TS 16949 requirements. Buyers acknowledge and agree that, if they use any non-designated products in automotive applications, TI will not be responsible for any failure to meet such requirements.

Following are URLs where you can obtain information on other Texas Instruments products and application solutions:

Products		Applications	
Amplifiers	amplifier.ti.com	Audio	www.ti.com/audio
Data Converters	dataconverter.ti.com	Automotive	www.ti.com/automotive
DSP	dsp.ti.com	Broadband	www.ti.com/broadband
Interface	interface.ti.com	Digital Control	www.ti.com/digitalcontrol
Logic	logic.ti.com	Military	www.ti.com/military
Power Mgmt	power.ti.com	Optical Networking	www.ti.com/opticalnetwork
Microcontrollers	microcontroller.ti.com	Security	www.ti.com/security
RFID	www.ti-rfid.com	Telephony	www.ti.com/telephony
Low Power Wireless	www.ti.com/lpw	Video & Imaging	www.ti.com/video
		Wireless	www.ti.com/wireless

Mailing Address: Texas Instruments, Post Office Box 655303, Dallas, Texas 75265
Copyright © 2007, Texas Instruments Incorporated